

Operating Instructions for Hot-Melt Glue Gun

MS 150 Glue Gun



Table of Contents

Product Description	3
Trouble-Shooting	4
General Safety Instructions	5
Start-up	7
Operation	9
Additional Information	10
EC-Conformity Certificate	11
Exploded Views	12
Spare Parts Legend	13

Dear customer,

The glue gun you purchased will help you to glue parts together more easily and more rapidly. Before using the gun, please read these instructions thoroughly.

Product Description

Proper Use

The gun works with and dispenses hot glue. Therefore, the glue gun should only be used by qualified people. Handling the gun properly will save you unnecessary accident hazards and problems.

Personal injury or material damage caused by an improper use of the Hot-Melt Glue Gun shall not be the manufacturer's but the user's responsibility.

Technical Data

Connection	230 V/120 V
Heating capacity	200 W
Temperature control	thermostat
Temperature control range	approx. 70 – 190°C
Heat-up time	approx. 10min
Tank capacity	150 g
Max. application per min.	100 g
Weight hand gun	1200 g

Accessories

Special nozzles available on request. Please ask for our accessory nozzle leaflet.

Trouble-Shooting

Survey on Possible Fault Signals and Assistance in Trouble-Shooting

In case of damage, send glue gun to Reka. We shall not be responsible for any repair made by the customer.

Problems	Possible Causes/ Faulty Operation	Trouble-Shooting
No or too little glue comes off though the heat-up time has been exactly observed	clogged nozzle temperature too low	unscrew nozzle, clean or replace it check temperature
Glue is too fluid or too consistent	temperature too high or too low	check temperature
Glue leaks out of nozzle	clogged nozzle	unscrew nozzle, clean it carefully or replace it. Unscrew nozzle at working temperature, wear gloves (risk of burning).
No temperature	gun switched off	connect plug to socket properly. If necessary, return gun to Rheological

General Safety Instructions

User's Care and Diligence

The Glue Gun has been designed and fabricated according to the applicable harmonized standards and further technical specifications. So, it is state of art and ensures a maximum of safety.

This safety, however, can only be achieved in practice, if all necessary measures have been taken. The user of the device shall be obliged to plan these measures and to make sure that they are taken.

In particular, the user shall ensure that

- the gun is in working order
- the required personal protective equipment (protective gloves) for the operating personnel is available and used
- the entire operating instructions are in legible condition and available to the operator
- only sufficiently qualified and authorized personnel operates and maintains the gun
- this personnel is regularly instructed in the applicable aspects of operational safety and environmental protection, and knows the operating instructions and, in particular, the safety instructions.

Make the information available:

This operating manual shall be kept on the site of operation. It must be ensured that all persons operating the gun can look into the manual at any time. In addition to the operating manual, the instructions pursuant to the Factory Act and the regulations as regards the use of equipment shall always be at the operator's disposal.

Meaning of the Various Safety Symbols

This operating manual shall give concrete advice as to safety to draw the user's attention to remaining unavoidable hazards. These hazards imply dangers to

persons
product and equipment

The symbols used in the operation manual shall, in particular, call attention to the safety instructions!



This symbol indicates that there is, above all, danger to persons, but also to equipment and material.

Caution: Hot surface!

Accident Prevention Regulations VBG 125 - W26

Hot surfaces such as machine parts, tanks or materials, but also hot liquids cannot always be perceived. The utmost caution is advised when this symbol is attached to a component.

Always wear protective gloves when you have to touch hot surfaces!

Safety Measures in Case of Normal Operation

The instrument must only be used by persons trained and instructed and being allowed to use it. They have to know the operating instructions and be able to work accordingly.

Prior to each use, check the gun for visible damage and make sure that it is in perfect condition!
Advise detected defects to your superior at once!



Safety Instructions for the Use of the Hot-Melt Glue Gun MS 150

Always follow the accident prevention regulation **VBG 81 - Processing of Glues** issued by the Professional Association of the Chemical Industry

Fill gun only just under the charging hole.

All visible material parts may warm up to 250 °C !

Never exceed working temperature of the hot melt.

Overheating may lead to decomposition which may affect health.

Never start working without having mounted a nozzle.

Do not direct glue jet towards people.

Prior to any nozzle replacement, unplug connecting cable.

When a nozzle is replaced, liquid glue may leak out. **Warning: Risk of burning!**

Never bring the hot nozzle in contact with the cable.

Ensure sufficient ventilation.

Do not inhale vapour escaping from the glue. **Attention: inhaling this vapour may cause irritations of the respiratory tract.**

When your skin got into contact with hot glue, cool it with cold water immediately.

Do not try to remove hot melt from the skin first. If necessary consult your doctor.

When hot adhesive got into your eyes, immediately cool them under running water for about 15 minutes and consult your doctor at once!

Never work without protective gloves and glasses!

Never fill in any solvents or paraffines to avoid risk of explosion.

- Note:**
- Do not lay gun on its side
 - Never overcharge gun
 - Press trigger only when gun is heated
 - Before you change the glue type, pump residual quantity out of the nozzle
 - Do not direct glue jet towards people
 - Do not carry out overhead work
 - Do not hold nozzle top upward
 - Never work without having mounted a nozzle
 - Stop using the gun, if casing is damaged due to shock, breakage or heavy wear.

Start-up and Operation

To avoid risk of stumbling:

Lay all instrument connections (cable, hoses, and lines) so that they do not cause any risk of stumbling (cable conduits, bridges)!

Operation of the Glue Gun

Plug connecting cable of MS 150 Glue Gun into socket with earthing contact.

Adjust working temperature requested. The temperature of the MS 150 Glue Gun is infinitely adjustable between approx. 70 and approx. 190 °C. For this, set rotary button to the requested position:

4	≡	approx. 70 °C	10	≡	approx. 160 °C
6	≡	approx. 100 °C	12	≡	approx. 190 °C

Minor leaking during the heat-up phase is due to hot melt expanding in the nozzle/heating chamber.

**Warning: Once the gun has warmed up, nozzle and cover are extremely hot!
Never work without wearing protective gloves!**

Loading of Glue

- The MS 150 Glue Gun is designed for applying solvent-free hot melts. Never fill the gun with other materials. The hot-melt glue gun can work with all the types of hot melts that are designed for working temperatures of up to max. 200 °C.
- As soon as the gun has warmed up (approx. 10 min.), open cover and fill granulate into the gun till it appears just under the rim of the charging hole.
- Close cover and allow some time for the glue gun to melt the glue (approx. 10 min. depending on type of glue).
- The quantity to be applied can be determined by pressing the trigger: the longer you press, the more glue comes out.

The cover must only be opened when the gun has warmed up!

Application of Hot Melts

Only start glueing, when the glue has properly molten.

Make yourself familiar with the instrument first. Apply a little glue in varying forms (small, large dots) on a piece of paper or cardboard. This is very easy.

Observe the correct working temperatures of the individual hot melts.

**Never start working without having mounted a nozzle!
Press the trigger only when gun has warmed up!**

Nozzle Replacement

Only replace nozzles when the glue gun is warm (instrument temperature 60 - 80 °C) and empty. You are advised to wear protective gloves.



Prior to exchanging nozzles, unplug connecting cable!

Replacing a cold nozzle may damage the gun. If the nozzle is replaced when it is too hot, liquid adhesive may leak out.



Attention: Risk of burning!

- When your skin got into contact with hot glue, cool it immediately with cold water.
- Do not try to remove hot melt from the skin first. If necessary, consult your doctor.
- When hot adhesive got into your eyes, immediately cool them under running water for about 15 minutes.
Consult your doctor at once!



Never start working without having mounted a nozzle!
Do not direct glue jet towards people!

Operation

The glue gun shall only be used/applied according to its intended use. Please see Section "General Safety Instructions".

Improper use of the gun may cause personal injury or material damage.

Non-observance of the safety instructions when working with the gun may lead to serious burns.

Make a functional test acc. to the following list, before you switch on the glue gun:

Check List

- Is the glue gun connected to 230/120 volts?
- Is the nozzle clean and free of any foreign matters?
- Is solvent-free hot melt in the gun?
- Has the heat-up time of approx. 10 minutes (depending on the glue type) been observed?

While you are working...

...the glue gun must always be deposited on the wire strap.

Never lay gun on its side!

- Open gun only if required; cover can only be opened while gun is warm.
- Keep hot melt free of dirt and humidity.

General Hints

- Do not start glueing before glue is fluid.
- Glues that have not molten completely will not reach the glueing temperature required.
- Not having the required glueing temperature, glues cannot produce optimum glueing results.
- Due to the high viscosity of partly molten glues a lot of manual energy will be needed to dispense them.
- This will cause some essential parts of the gun to wear very fast .



Always deposit glue gun on the wire strap provided for this purpose. Never lay glue gun on its side!

-
- Note:**
- Do not lay glue gun on its side
 - Never overcharge gun
 - Do not direct glue jet towards people
 - Do not hold nozzle top upwards
 - Do not carry out overhead work
 - Never exceed working temperature of the glue
 - Stop using the gun, if casing is damaged due to shock, breakage or heavy wear.

Only fill clean and solvent-free glue into the gun. Contaminated glue, nails, clamps, sand, etc. cause malfunctions. The use of solvents, petrol, benzole, toluol, acetone, terpentine, etc. will lead to an explosion. Never use these materials!

If you observe the operating instructions, the gun does normally not need cleaning.

If the gun is used very often, it has to be maintained regularly. To set a date, please call our service department.

Additional Information

Do you have any more questions or requests? We should be glad to help you.

Please contact us at phone no. ++44 (0)207-837-1289

Our mailing address is:

Rheological Limited
Cambridge Mews
Cambridge Road
Kew, Richmond
Surrey TW9 3JB
United Kingdom

e-mail: sales@rheological.co.uk

Internet: www.rheological.co.uk

EC-Conformity Certificate

acc. to EC Guideline 89/392/EEC, Supplement IIA

This is to certify that the below-described machine, as regards its design and type, as well as the construction sold by us, is in conformity with the relevant safety and health regulations of the EC guideline.

Description of the machine	:	MS 150 Glue Gun
Intended use	:	Application of solvent-free hot melts
Type of machine	:	MS 150
Serial number	:

Design modifications influencing the technical data specified in the operating manual and the intended use, thus meaning a considerable change of the device, render this conformity certificate invalid!

Relevant EC guideline : EC Machine Guideline (89/392/EEC)
Amendment of Machine Guideline
(91/368/EEC)

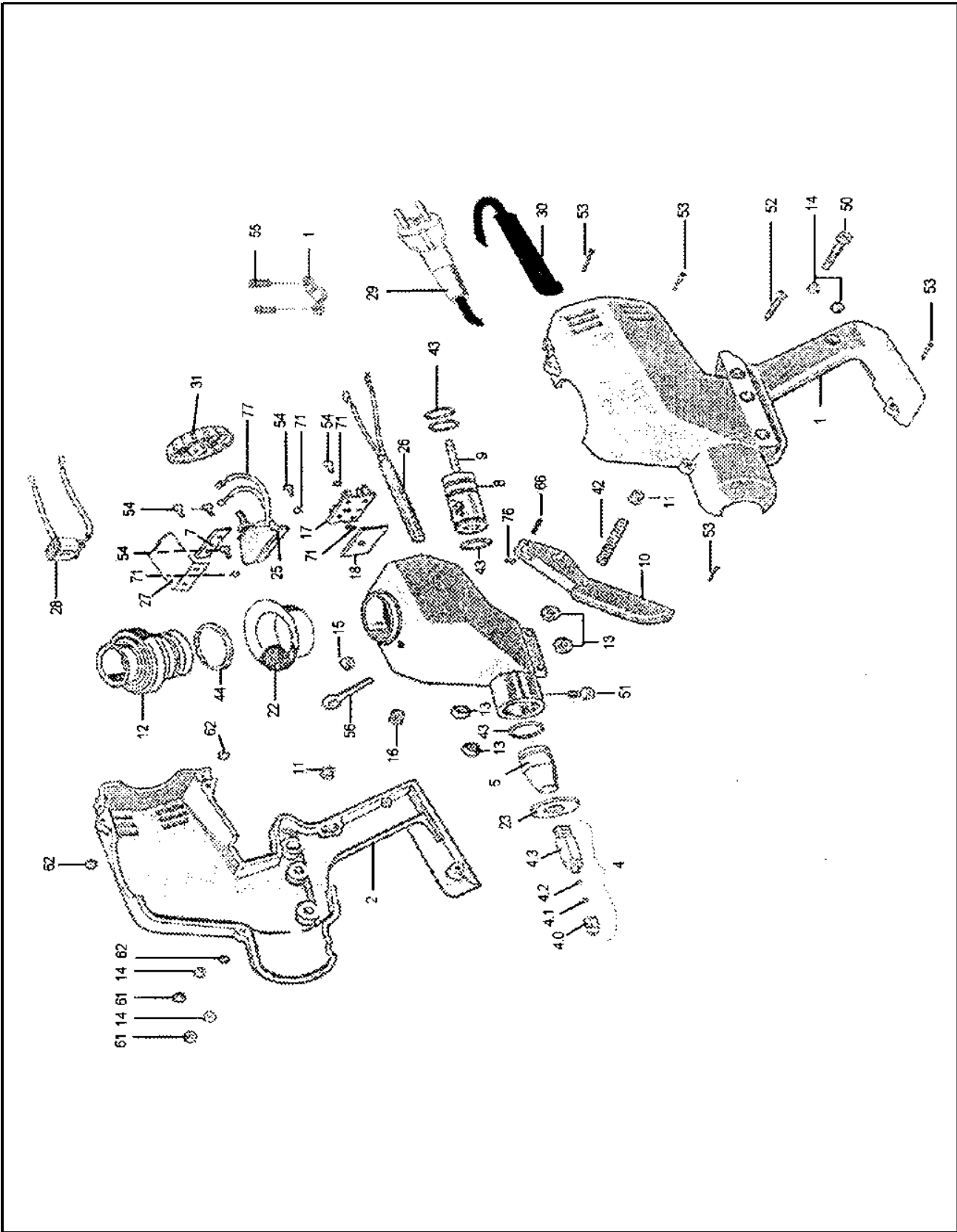
The filwg. harmonized standards have been applied : EN 60204 Part 1 (DIN VDE 0113 Part 1)
EN 292 Parts 1 and 2, EN 349, EN 294

An original version of the operating instructions for the glue gun, in the national language of the user - here English - is enclosed.

Place / manufacturer : Rheological Limited - London

Date : December 2001

Signatures : 
.....
Karl Coenen
Product manager



SPARE PARTS PRICE LIST

HUBNER HOT MELT GUN MODEL MS150

Part Number	Description	Price £ each
MS150 021	Cashing - Right hand	42.50
MS150 011	Casing - Left hand	42.50
MS150-031	Melt Pot	125.00
MS150 040	Nozzle 1.75 mm	6.75
MS150 041 A	Nozzle Assy 1.75mm	20.00
MS150 051 A	Outlet Piece c/w Piston O Ring (430)	27.42
MS150 061	Nozzle Holder	11.20
MS150 070	Retaining Bar - for teflon shroud	2.22
MS150 080 A	Piston Assy. C/w 3 O Rings (430)	42.40
MS150 100 A	Trigger c/w Pin & Clip (661)	25.12
MS150 110	Trigger Bush (2 required)	6.25
MS150 120 A	Filler Cap c/w O Ring (440)	26.80
MS150 130	Conical housing Spacer (4 required)	2.05
MS150 140	Insulation Washer (2 required)	1.85
MS150 150	Side Spacer (2 required)	1.85
MS150 160	Front Spacer (2 required)	1.85
MS150 170	Terminal Block	25.10
MS150 180	Insulation Plate	6.80
MS150 190	Insulation Bush (2 required)	3.15
MS150 210	Nozzle Ball Valve	.85
MS150 220	Collar Insert	5.10
MS150 231	Drip Guard	.95
MS150 250	Thermostat	39.90
MS150 260	Heat Cartridge (220v) 2 required	27.10
MS150 261	Heat Cartridge 110v (2 required)	27.10
MS150 270	Teflon Shroud	4.80
MS150 280	Neon Light 220v	9.50
MS150 281	Neon Light 110v	9.50
MS150 290	Power Cable	13.75
MS150 310	Temperature Dial	5.35
MS150 370	Cable Grip	2.40
MS150 411	Nozzle Spring	1.24
MS150 4112	Copper Washer 1/8" BSP	.61
MS150 4114	Copper Washer 1/4" BSP	.69
MS150 420	Trigger Spring	2.55
MS150 430	Piston O Ring (4 required)	3.65
MS150 440	Filler Cap O ring	5.40
MS150 500	Bolt - Body (2 required)	1.75
MS150 511	Bolt - Outlet Piece	.65

Continued.....

SPARE PARTS PRICE LIST

**HUBNER HOT MELT GUN
MODEL MS150**

PAGE -2-

Part Number	Description	Price £ each
MS150 520	Screw - Handle	.65
MS150 530	Screw - Cable Grip (2 required)	.65
MS150 540	Screw - Electrics (5 required)	.65
MS150 545	Screw - Terminal Block	.65
MS150 550	Screw - Casing (4 required)	.65
MS150 560	Eye Hook c/w locknut	5.20
MS150 610	Nut - Self locking (2 required)	.65
MS150 620	Nut - Casing (4 required)	.65
MS150 661	Trigger Pin c/w clip	1.65
MS150 710	Lock Washer (4 required)	.65
MS150 720	Washer (3 required)	.65
MS150 810	Nozzle 1.00 mm	6.75
MS150 811 A	Nozzle Assy. 1.0mm	20.00
MS150 820	Nozzle 2.5 mm	6.75
MS150 821 A	Nozzle Assy. 2.5mm	20.00
MS150 830	Nozzle Swivel Fishtail 8mm	24.23
MS150 831 A	Nozzle Assy. Swivel Fishtail 8mm	37.43
MS150 840	Nozzle Swivel Fishtail 18mm	45.15
MS150 841 A	Nozzle Assy. Swivel Fishtail 18mm	65.19
MS150 850	Shoemaker Nozzle (30mm) cone	8.85
MS150 851 A	Nozzle Assy. Shoemaker	28.89

N.B. All Prices are subject to carriage and VAT at the standard rate.