

# Operating Instructions for Hot-Melt Glue Applicators

**TR 50.4**



**TR 55**



**TR 60**



**TR 700**



**TR 70**



**TR 80**



## Table of Contents

1.	Product Description	3
2.	General Safety Instructions	4
3.	Safety Measures to be taken during Operation	5
4.	Start-up and Control	6
5.	Cleaning and Maintenance	10
6.	Trouble-Shooting	12
8.	Environmental Protection	13
9.	CE Declaration of Conformity	14

## Glue Applicators

### Spare Parts | Technical Data | Accessories

10.	TR 50.4	16
11.	TR 55	18
12.	TR 60	20
13.	TR 700	22
14.	TR 70	24
15.	TR 80	26

# Product Description

Dear customer,

the glue applicator you purchased will help you to glue parts together more easily and more rapidly. To ensure optimum usage of the glue applicator we recommend that you read these instructions thoroughly before using the applicator for the first time.

The type of your applicator can be taken from the nameplate fitted to the side of the casing.



## Intended Use

The applicator works with hot glue which is dispensed by a pneumatic conveying system. Therefore, this glue applicator should only be used by qualified persons who have been familiarized with its proper use and the safety precautions. Handling the applicator properly will avoid unnecessary accident hazards and problems.

Bodily injury or material damage caused by not using the glue applicator as intended shall not be the manufacturer's, but the user's responsibility.

# Instructions

## Care and Diligence of the User

The glue applicator has been designed and fabricated in conformity with the applicable harmonized standards and additional technical specifications. So, it is state of the art and ensures maximum safety.

This safety, however, can only be achieved in the operational practice, if all the necessary measures are taken. The user of the equipment shall be obliged to plan these measures and to make sure that they are taken.

### In particular, the user shall ensure that

- the applicator to be used is in good working order
- the personal protective equipment (protective gloves, safety goggles) required for the operating personnel is available and used
- the operating instructions are in legible condition and available to the operator
- only sufficiently qualified and authorized personnel operates and maintains the applicator
- this personnel is regularly instructed in the applicable regulations of operational safety and environmental protection and knows the operating instructions and, in particular, the safety instructions.

## Making the Information Available

This operating manual shall always be kept at the place of operation of the applicator. Be sure that all persons handling the applicator can consult the instructions at any time. In addition to this operating manual, there must be available instructions regarding legal and other mandatory regulations relating to accident prevention and to relevant requirements of the employers' liability insurance association.

## Safety Symbols

This operating manual gives concrete safety instructions to alert the user to remaining unavoidable hazards. These hazards imply dangers to

- persons
- product and equipment

### Meaning of the Symbols used in the Manual



This symbol indicates that there is, above all, danger to persons, but also to equipment and material.



Caution: hot surface!

Accident Prevention Regulation VBG 125 – W26  
Hot surfaces such as machine parts, tanks or materials, but also hot liquids cannot always be perceived. The utmost caution is advised when this symbol is attached to a component. Wear protective gloves whenever you have to touch hot surfaces.



Wear protective gloves and safety goggles whenever you work with the applicator.



To avoid accidents lay the cables so that they will not cause any risk of stumbling.

# Safety Measures to be taken during Operation

The applicator must only be used by trained, instructed and authorized persons. These persons must have read the operating instructions and be able to work accordingly. Before using the applicator, check it for visible damage and make sure that it is only used when in proper and safe condition.

Notify detected defects to your superior immediately.

## Safety Instructions for the Operation of the TR 50.4 / 55 / 60 / 700 / 70 / 80 Hot-Melt Glue Applicators



Wear protective gloves and safety goggles whenever you work with the applicator.



Avoid accidents by stumbling – Lay all cables, hoses and conducts so that they will not cause any risk of stumbling. For this, install cable ducts and bridges.

- The pressure of the compressed air supplied to the instrument must not exceed 6 bars.
- Only fill the tank up to 1.5 cm under the upper rim.
- **Never** exceed the operating temperature of the hot melt. This temperature is indicated in the technical specification of the glue. Overheating may lead to decomposition which may affect the health of the user as well as the operability of the applicator.
- Once the glue applicator has warmed up, nozzle and lid are very hot.
- Do not start working before fitting a nozzle first.
- Unplug the connecting cable before replacing a nozzle. Warning: risk of burns! When a nozzle is replaced, liquid glue might leak out.
- **Never** bring the hot nozzle into contact with the cable.
- **Never** direct the glue jet towards people.
- When your skin got into contact with hot glue, cool it with cold water immediately. Do not try to remove the hot-melt from the skin first. If necessary, consult a doctor. When hot adhesive got into your eyes, immediately cool them under running water for about 15 minutes and consult your doctor at once.
- The applicator must vent audibly. Otherwise hot glue might flow out of the sound absorber when the trigger is operated.
- Only open the lid of the glue tank when the tank has been vented.
- Do not lay the applicator on its side.
- **Never** hold nozzle top upward.
- Do not carry out overhead work.
- Stop using the equipment, if the casing is damaged due to shock, breakage or heavy wear.
- Even when the applicator is switched off, it may be under pressure and glue may flow out.
- Do not feed solvents or paraffin. Risk of explosion!

# Start-up and Control



Avoid accidents by stumbling – Lay all cables, hoses and conducts so that they will not cause any risk of stumbling. For this, install cable ducts and bridges.



Wear protective gloves and safety goggles whenever you work with the applicator.



**Never** direct the glue jet towards people!

Only open the lid when the tank has been vented.  
The applicator must vent audibly.

Do not lay the applicator on its side.

**Never** hold nozzle top upward.

Do not carry out overhead work.

**Never** start working before fitting a nozzle first.

Do not overcharge the applicator; only fill it up to max. 1.5 cm under upper rim.

If the stand is used to deposit the applicator, remove the wire stand!

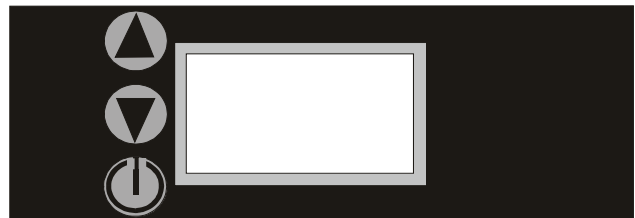
Stop using the equipment, if the casing is damaged due to shock, breakage or heavy wear.

The glue applicator must only be used/applied for its intended purpose. Please read the chapter „General Safety Instructions“. If it is not used as intended, this may cause personal injuries or equipment damages. Disregard of the safety instructions for the use of the applicator may lead to serious burns.


**Before you connect the applicator perform functional tests according to the following list:**

- Is compressed air supplied to the glue applicator?
- Is the pressure max. 6 bars and min. 2 bars?
- Is the applicator connected to 230 volts (or 120 volts, if required by the specific applicator) ?
- Is the applicator switched on?
- Is the nozzle clean and free of foreign matters?
- Is hot-melt glue in the melting tank?
- Has the heat-up time of approx. 10 minutes (depending on glue type) been kept?



**Set the hot-melt working temperature (all LCD types)**





Switching the applicator on and off:

Press the  button to switch the applicator on or off.

Raising the temperature:

Press the  button until the desired temperature is indicated. Press the  button once to confirm the setting.

Reducing the temperature:

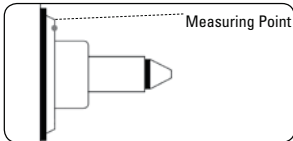
Press the  button until the desired temperature is indicated. Press the  button once to confirm the setting.

While the applicator is heating up to the set temperature, the numbers on the display are flashing. If the chosen temperature is not confirmed within a few seconds, the applicator will use the last set temperature.

## Setting the Working Temperature of the Hot-Melt (TR 50.4)

After having started the applicator, wait for approx. 10 minutes and check the working temperature at the thermometer (component drawing page 16). If necessary, correct the temperature at the thermostat (component drawing page 16).

Clockwise = higher temperature  
Anti-clockwise = lower temperature



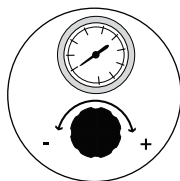
Minor leaking out of the nozzle during the heat-up phase is due to the hot-melt expanding in the nozzle/heating chamber. As soon as the working temperature is reached, the hot-melt will not leak out any more.

### Warning:

The temperature regulation is not calibrated! If an exact temperature is required, use a calibrated temperature probe to check the temperature.

### Stand including pressure regulator and pressure gauge

The precision adjustment for the compressed air regulates your glue application exactly to the quantity needed. The set pressure may be read from the indication of the pressure gauge.

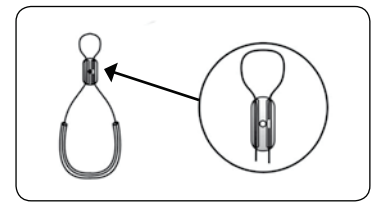
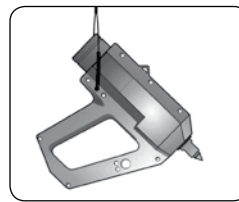


- When you use the stand for depositing the applicator, remove the wire stand.
- Connect the compressed-air hose to the rear side of the stand. Connect the glue applicator and the stand with the compressed-air hose which is firmly fitted to the glue applicator. (TR 50.4 / 55 / 700 / 70)
- Pressure controller on the right = air for spray air discharge 1 - 2 bars\* (TR 60 / 80)
- Pressure controller on the left = air for glue discharge 2 - 4 bars\* (TR 60 / 80)

## Working with a Balancer (Spring Motion)

If the glue applicator is fixed to a balancer (spring motion), it is recommended to use the suspension art. 10436. Thereby it is avoided that, by a wrong positioning, glue gets into the vent valve.

This applies to glue applicators  
TR 55, TR 700, TR 70, TR 80.



## Working with Stationary Equipment (in connection with pneumatic foot switch)



### Warning:

Risk of burns!

When, in the stationary mode of operation, workpieces are passed below the glue applicator by hand, there is a risk of burns; so, it is absolutely necessary that you wear protective gloves.

First, mount the pneumatic foot switch and the stationary equipment. The relevant instructions are supplied together with the respective accessories. To connect the system, proceed as follows:

- Press the trigger (item 7) down to stop and hold it.
- Put the enclosed plug into the borehole provided for this purpose at one side of the casing handle.
- Release the trigger.
- The trigger is locked.



\*Depending on the glue type and the desired quantity to be applied

# Start-up and Control

## Loading Hot-Melt Glue (TR 50.4 / 55 / 60)

- As soon as the applicator has warmed up, turn the star grip (no. 6) anti-clockwise and open the lid (TR 50.4 / 60: item 3; TR 55: item 4) upward.  
Now, you can load the desired non-reactive glue.
- Only fill the tank up to approx. 1.5 cm below its upper rim. Turn the star grip clockwise to close the lid.
- Allow approx. 3 – 10 minutes, depending on the quantity and type of glue, for the applicator to melt the hot-melt.
- The quantity to be applied is determined by how long the trigger is pulled. The longer it is pressed, the more glue comes out.

## Using PUR Hot-Melt Cartridges (TR 700 / 70 / 80)

New cartridges may be inserted or exchanged, when the applicator is warm or cold. Do only use cartridges in perfect condition, that is, without dents, etc., so that the piston may move freely in the cartridge.



Wear protective gloves and safety goggles whenever you work with the applicator.



When the applicator has warmed up, there is a risk of burns!



If, when changing the cartridge, another type of glue is used, the nozzle must be rinsed thoroughly (see chapter „Cleaning of the Nozzle/Nozzle Adapter“).

## Preparation of the Cartridge



To open the cartridge pierce the outlet, using a pointed tool.



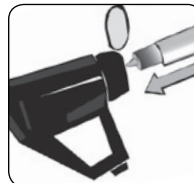
Screw the nozzle/nozzle adapter on the cartridge

## Preheating the Cartridge

To ensure optimum operation it is recommended to preheat the closed cartridge in the switched-on glue applicator. After about 10 minutes, depending on the type of glue, take off the preheated cartridge and open it at the outlet; screw the enclosed adapter incl. nozzle (see chapter „Preparation of the Cartridge“) on. Alternatively, the cartridge may also be preheated in our cartridge preheater (article 5398 (230 V); article 5399 (120 V)).

## Loading the Hot-Melt Cartridge

- As soon as the applicator has warmed up, turn the star grip (item 6) anti-clockwise and open the lid (item 5) upward.
- Be sure that the cartridge outlet has been opened (see „Preparation of the Cartridge“).



Insert the cartridge into the cartridge applicator.



20 Min.

Allow approx. 20 minutes for the applicator to warm up (depending on the type of glue). Warming-up will not take as long, if the cartridge has been preheated.



Apply the hot-melt glue.



If an empty cartridge is replaced by a full one containing a different type of glue, nozzle and adapter must be cleaned.

For this, please read „Cleaning the Nozzle/Nozzle Adapter after working with PUR Hot-Melt Glue Cartridges“ in chapter „Cleaning and Maintenance“.

### Applying Hot-Melt Glue



Wear protective gloves and safety goggles whenever you work with the applicator.



**Never** start working before fitting a nozzle first.

**Never** direct the glue jet towards people!



When your skin got into contact with hot glue, cool it with cold water immediately. Do not try to remove the hot-melt from the skin first. If necessary, consult a doctor. When hot adhesive got into your eyes, immediately cool them under running water for about 15 minutes and consult your doctor at once.

Make yourself familiar with the instrument first. Apply a little glue in varying forms on a piece of paper or cardboard. For example, lines, small or big spray or glue points. Try to find out the correct quantity and the ideal pattern by adjusting the air and glue quantities by means of the pressure regulator at the stand (TR 60 / 80), always observing the correct working temperatures of the specific hot-melt. This temperature is indicated in the technical datasheet of the respective hot-melt.

### Spraying Hot-Melt Glues (TR 60 / 80)

The supplied hot-spray systems TR 60 / 80 are designed for spraying pressure-sensitive adhesives and PUR hot-melt glues. Please check, whether the complete spray head (drawing Detail Front) is fitted to the applicator; if

this is not the case, attach it. The spray cap (item 32) must be screwed on slightly by hand; **never** use any tools. You are advised to wear protective gloves.

### Modification for Bead and Dot Application (TR 60 / 80)

For this, the complete spray head must be exchanged. Please see the following chapter „Replacement of Nozzles“. The correct nozzle assembly is shown in the attached drawing „Nozzle Assembly for Bead and Dot Application“. To apply dots, beads and lines, the pressure regulator for the spray air on the stand must be set to zero pressure.

### Replacement of Nozzles



Warning: risk of burns!

When your skin got into contact with hot glue, cool it with cold water immediately. Do not try to remove the hot-melt from the skin first. If necessary, consult a doctor. When hot adhesive got into your eyes, immediately cool them under running water for about 15 minutes and consult your doctor at once.



For your own safety wear protective gloves and safety goggles whenever you work with the applicator.



Unplug the connecting cable before replacing nozzles!

Only replace nozzles when the applicator is warm (applicator temperature 60-80 °C) and the glue tank is empty. Replacing a nozzle when the applicator is cold, may damage the applicator. If the nozzle is replaced when the applicator is too hot, liquid glue may leak out. For the melting range and the melting point of the used glue, please see the technical datasheet of the respective glue.

# Cleaning and Maintenance

**Never** fill soiled glue into the melting tank. If you observe all advices given in the operating manual, the glue applicator does, normally, not need cleaning. The non-reactive glue contained in the applicator will remelt and can be used for glueing again.

The working temperature of the respective glue may be taken from the technical datasheet which can be procured from the producer of the glue. This temperature must not be exceeded, otherwise the glue may coke in the glue applicator. Hot-melts on a polyamide basis are particularly sensitive. If the glue has coked, the applicator should be cleaned with REKA cleaning liquid (article 3519).

**Never** clean the applicator with solvent, benzine, benzene, toluene, acetone, turpentine, etc. risk of explosion!

When reactive PUR hot-melt glues are used, the adapter and the nozzles must be flushed thoroughly. For this, use a special cleaning agent in 310ml cartridges. Please ask the glue producer for the cleaning agent suited for the glue used by you.

If the applicator is used very often, we recommend to have it maintained regularly. For this, fix a date with our service department.

## Cleaning the Nozzle/Nozzle Adapter after having applied PUR Hot-Melt Cartridges (TR 700 / 70 / 80)

When the applicator will not be used for a longer time, we recommend that you clean the nozzle/the adapter because reactive PUR hot-melts may harden within a short time, and cannot melt any more.



Warning: risk of burns!



For your own safety you are advised to wear protective gloves and safety goggles when replacing nozzles.

## Proceed as follows:



Remove the PUR cartridge from the applicator.



Unscrew the nozzle adapter from the warm glue cartridge.



Use a pointed tool (screw driver, knife or the like) to open the outlet of the PUR-cleaner cartridge.



Screw the nozzle adapter on the screw thread of the cleaner cartridge.



Insert the cleaner cartridge in the applicator.



Allow about 20 minutes for the applicator to warm up the cleaner.



Flush the nozzle adapter with cleaner until you see cleaning agent come out steadily.

- Remove the cleaner cartridge from the applicator and unscrew the nozzle/nozzle adapter from the cleaner cartridge while it is still warm. Allow the cleaner cartridge to cool and keep it for further use.

## Cleaning the Vent Valve

Each time the trigger (item 7) has been pulled, the applicator must audibly vent through the vent valve. If the sound absorber (item 8) got stuck, the glue tank may be under pressure.



Warning:  
With this, hot glue might come out of the sound absorber!

Prevent liquid glue from getting into the sound absorber, when the applicator is ready for operation by ...

- depositing the glue applicator on a level plane, using its wire bracket
- depositing the glue applicator on the stand without the fitted wire bracket
- suspending the glue applicator at a spring balancer (article 3544)
- filling the glue applicator only up to approx. 1.5 cm under the upper rim

If, nevertheless, glue should have got into the vent valve, clean it or replace the sound absorber (item 8), the DT SEV (item 9) and the L-screwing (item 10).

Even if the applicator has been switched off, it may be under pressure and glue might flow out.

# Trouble-Shooting

## List of possible fault indications and assistance in trouble-shooting

In case of damage, send the glue applicator to Reka, indicating type and serial no. of your applicator. We shall not be responsible for any repair made by yourselves.

Fault	Possible cause/operating error	Measures to be taken
<b>No or too little glue comes off though the heat-up time has been observed exactly</b>	<ul style="list-style-type: none"> <li>• Clogged nozzle</li> <li>• The piston got stuck in the cartridge</li> <li>• Pressure too low</li> <li>• Temperature too low</li> <li>• Defective valve</li> </ul>	<ul style="list-style-type: none"> <li>• Unscrew nozzle, clean or replace it</li> <li>• Replace cartridge</li> <li>• Check pressure regulator</li> <li>• Check temperature</li> <li>• Replace valve</li> </ul>
<b>The glue is too fluid or too thick.</b>	<ul style="list-style-type: none"> <li>• Temperature either too high or too low</li> </ul>	<ul style="list-style-type: none"> <li>• Check the temperature</li> </ul>
<b>Glue leaks out of the nozzle</b>	<ul style="list-style-type: none"> <li>• The sound absorber got stuck</li> <li>• Clogged nozzle</li> <li>• The piston got stuck in the cartridge</li> <li>• The spring pressure of the ball valve (nozzle) is too low</li> </ul>	<ul style="list-style-type: none"> <li>• Clean or replace the sound absorber</li> <li>• Unscrew the nozzle and clean it carefully or replace it. Unscrew the nozzle at operating temperature; wear gloves (risk of burns)</li> <li>• Replace the cartridge</li> <li>• Re-adjust the spring pressure of ball valve (nozzle)</li> </ul>
<b>The applicator does not heat up</b>	<ul style="list-style-type: none"> <li>• The applicator is switched off (LCD types)</li> <li>• The thermostat is switched off (TR 50.4)</li> <li>• Defective thermostat (TR 50.4)</li> <li>• Defective electronics</li> </ul>	<ul style="list-style-type: none"> <li>• Is the applicator properly connected to power?</li> <li>• Is the applicator switched on?</li> <li>• Check the thermostat and, if need be, switch it on</li> <li>• Replace the thermostat*</li> <li>• Send the applicator in</li> </ul>
<b>The spray pattern is not optimum (applicable to TR 60 / 80 types)</b>		<ul style="list-style-type: none"> <li>• Check the spray air discharge</li> <li>• Set the glue pressure regulator on the stand to zero pressure</li> <li>• Open spray air pressure regulator on the stand (maximum 6 bars).</li> <li>• Set temperature to 200 °C .</li> <li>• After approx. 30 sec., hot spray air must be dispensed. If, after this time, the spray air coming out of the applicator is not hot, send the applicator in.</li> </ul>
<b>The display indicates: 999 (applicable to all LCD types)</b>		<ul style="list-style-type: none"> <li>• If this message is given, unplug the mains plug and put it in again. Switch the glue applicator on again.</li> <li>• If this problem is still present, send the applicator in for checking please.</li> </ul>

# Environmental Protection



**Never** throw electric tools in the domestic waste. According to the European directive 2002/96/EC for used electric and electronic devices and according to national regulations, used electric tools must be collected separately and treated in an environmentally compatible way for re-use.

Reka packing material can be recycled completely.

Please take instructions for the disposal of hot-melt glues and hot-melt cartridges from the respective safety specifications.

## **Additional Information**

Do you have any more questions or requests? We should be glad to help you.

RHEOLOGICAL LIMITED  
UNIT 6, ST MARGARETS BUSINESS PARK  
MOOR MEAD ROAD  
TWICKENHAM  
MIDDLESEX  
TW1 1JN  
UNITED KINGDOM

TEL: 0044-207-837-1289  
FAX: 0044-208-744-2222  
EMAIL: [sales@rheological.co.uk](mailto:sales@rheological.co.uk)  
WEB: [www.rheological.co.uk](http://www.rheological.co.uk)

# CE Declaration of Conformity

Product: **Hot-Melt Glue Applicators**

Types: **TR 50.4**  
**TR 55**  
**TR 60**  
**TR 700**  
**TR 70**  
**TR 80**

This is to certify that the above applicators in the design marketed by us are in conformity with the following EC directives:

**until 15-01-2007: 73/23/EEC, from 16-01-2007: 2006/95 EC**  
**until 19-07-2009: 91/368 EEC, from 20-09-2009: 2004/108 EC**  
**until 28-12-2009: 89/336 EEC, from 29-12-2009: 2006/42 EC**  
**2002/95/EC**

The following standards have been applied:

**IEC CISPR14**  
**IEC 60335**  
**IEC 60204**  
**IEC 61000**

Christa Armbruster  
*Management Purchasing and Production*



# Hot-Melt Glue Applicators

Spare Parts | Technical Specifications | Accessories



TR 50.4



TR 55



TR 60



TR 700

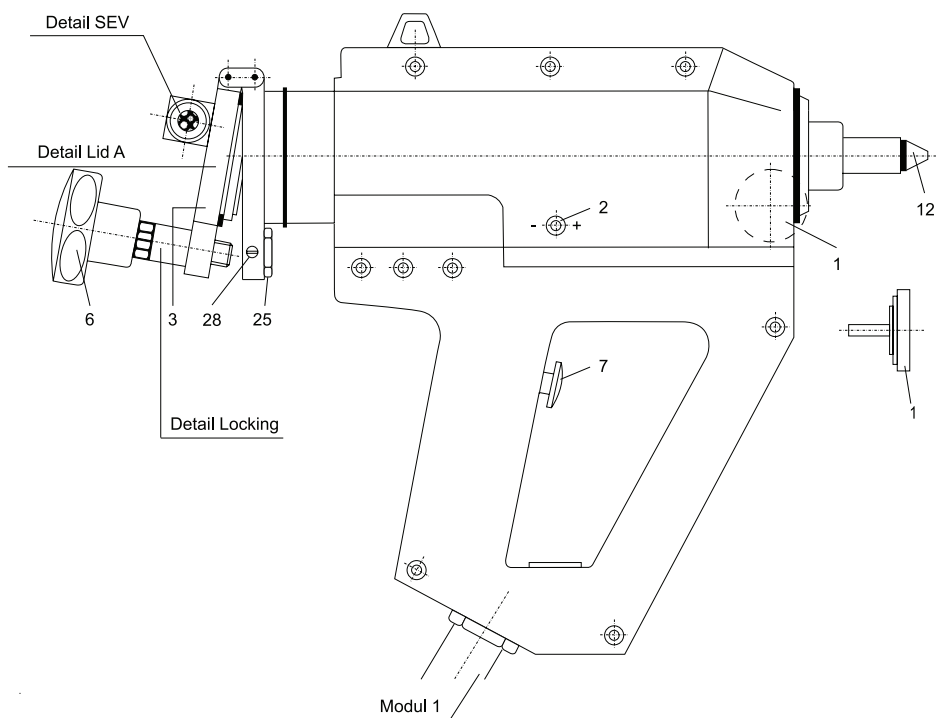


TR 70



TR 80

DET\_B\_EN\_TR 50.4

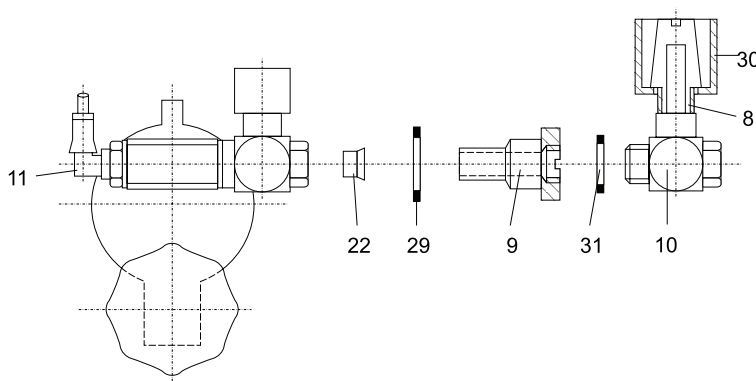


No. Art.No. name of article

1	2518	Thermometer
2	2517	Thermostat
3	3657	Lid "A" for TR 50.4 / 60
4	3661	Lid "D" for TR 55
5	3660	Lid "C" for TR 70 / 700 / 80
6	2613	Star Grip
7	2711	Trigger
12	3074	Nozzle M 14 for TR 50.4 / 55
13	1143	Nozzle M10 for TR 70 / 700
25	2884	Lock Nut for Lid Release
28	2911	Cover safety screw
35	2958	Adapter
38	2918	Switch on/off

DET\_Deckel-A\_EN (50.4/60)

Detail SEV

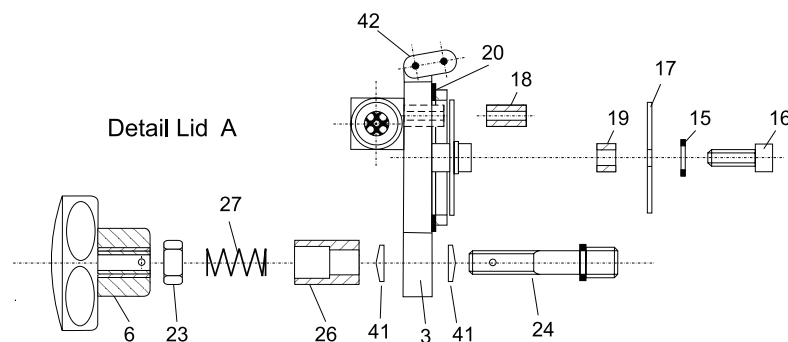


No. Art.No. name of article

3	3657	Lid A for TR 50.4 / 60
4	3661	Lid D for TR 55
5	3660	Lid C for TR 70 / 700 / 80
6	2613	Star Grip
8	2683	Sound Absorber SEV
9	2693	DT-SEV
10	3016	L-Screwing
11	2697	90°-Screwing
14	3051	Spray Nozzle
15	2800	Disc
16	2801	Screw M6 x 16
17	2819	Plate
18	2820	Spacer
19	2802	Intensification
20	2603	O-Ring D 40x3 for TR 50.4 / 60
22	2696	Membrane
23	3665	Lock nut M 8
24	2883	Lid release shaft
26	2885	Spacer bush
27	2718	Spring
29	2692	O-Ring SEV
30	2694	Cap SEV D 18
31	2695	O-Ring DT SEV
32	3088	Spray Cap
33	2616	Spacer 25x2
36	2955	Flat Seal Gasket
37	2953	Cartridge piercer
41	2124	Disc Spring
42	2617	Hinge link

Detail Lid A

Detail Locking





# Legend for Glue Applicator TR 50.4 – Art. 5327 (230 V), 5333 (120 V)

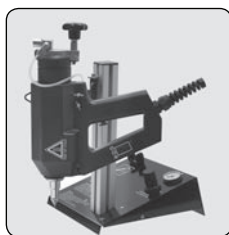
TR 50.4

## Technical Data

Denomination	TR 50.40
Article number	<b>5327</b> (230 V), <b>5333</b> (120 V)
Weight	1200g
Power supply	230 V / 50 Hz, 120 V / 60 Hz
Power consumption	400 Watt
Current consumption	1,75 A
Degree of protection	I
Class of protection	IP 30
Temperature control	Thermostat
Temperature limitation	Temperature controller
Operating temperature	20-200 °C
Consistency of temperature	+/- 5 °C
Temperature indication	Analogue
Heat-up time	3-10 min.
Tank capacity	250 ml
Conveying system	Air pressure
Operating pressure	0,5 - 6 bar
Length of electric cable	8,5 m
Recommended melts	Hot-melt granulate, pillows and sticks

## Accessories (optional)

Stand for storing  
**art. 3587**



Balancer **art. 3544**

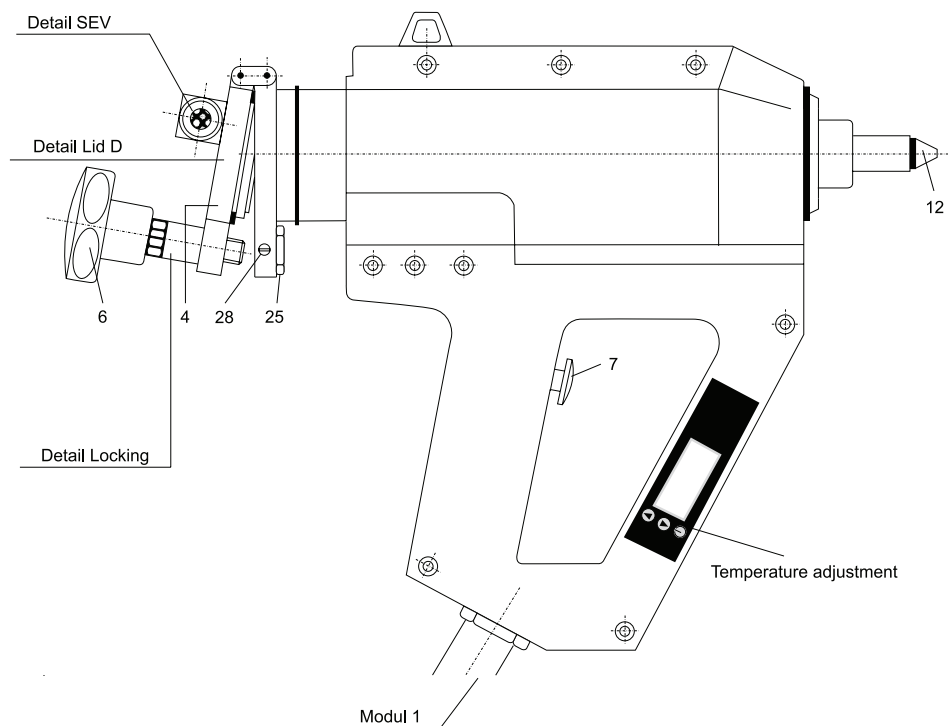


Premelter **art. 5563** (230 V)  
Premelter **art. 5567** (120 V)



Stationary equipment **art. 3618** (only in conjunction with stand for storing **art. 3587**)

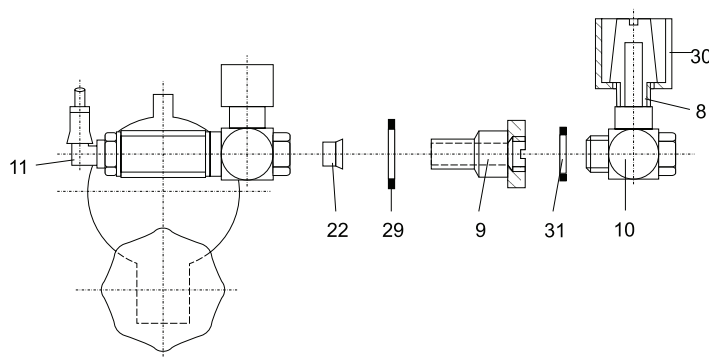
DET\_B\_EN\_TR55



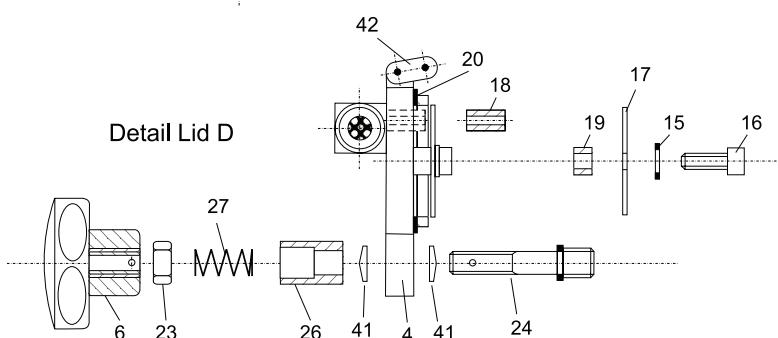
No.	Art.No.	name of article
1	2518	Thermometer
2	2517	Thermostat
3	3657	Lid "A" for TR 50.4 / 60
4	3661	Lid "D" for TR 55
5	3660	Lid "C" for TR 70 / 700 / 80
6	2613	Star Grip
7	2711	Trigger
12	3074	Nozzle M 14 for TR 50.4 / 55
13	1143	Nozzle M10 for TR 70 / 700
25	2884	Lock Nut for Lid Release
28	2911	Cover safety screw
35	2958	Adapter
38	2918	Switch on/off

EXP\_Deckel\_D\_E (TR 55)

Detail SEV



Detail Locking



No.	Art.No.	name of article
3	3657	Lid A for TR 50.4 / 60
4	3661	Lid D for TR 55
5	3660	Lid C for TR 70 / 700 / 80
6	2613	Star Grip
8	2683	Sound Absorber SEV
9	2693	DT-SEV
10	3016	L-Screwing
11	2697	90°-Screwing
14	3051	Spray Nozzle
15	2800	Disc
16	2801	Screw M6 x 16
17	2819	Plate
18	2820	Spacer
19	2802	Intensification
20	2603	O-Ring D 40x3 for TR 50.4 / 60
22	2696	Membrane
23	3665	Lock nut M 8
24	2883	Lid release shaft
26	2885	Spacer bush
27	2718	Spring
29	2692	O-Ring SEV
30	2694	Cap SEV D 18
31	2695	O-Ring DT SEV
32	3088	Spray Cap
33	2616	Spacer 25x2
36	2955	Flat Seal Gasket
37	2953	Cartridge piercer
41	2124	Disc Spring
42	2617	Hinge link

# Legend for Glue Applicator TR 55 – Art. 5356 (230 V), 5359 (120 V)

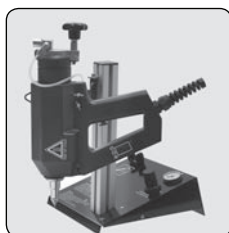
TR 55

## Technical Data

Denomination	TR 55
Article number	<b>5356</b> (230 V), <b>5359</b> (120 V)
Weight	1400g
Power supply	230 V / 50 Hz, 120 V / 60 Hz
Power consumption	400 Watt (600 Watt available upon request)
Current consumption	1,75 A
Degree of protection	I
Class of protection	IP 30
Temperature control	Thermostat
Temperature limitation	Temperature controller
Operating temperature	50-210 °C
Consistency of temperature	+/- 2 °C
Temperature indication	Digital
Heat-up time	3-10 min.
Tank capacity	330 ml
Conveying system	Air pressure
Operating pressure	0,5 - 6 bar
Length of electric cable	8,5 m
Recommended melts	Hot-melt granulate, pillows and sticks

## Accessories (optional)

Stand for storing  
**art. 3587**



Balancer **art. 3544**

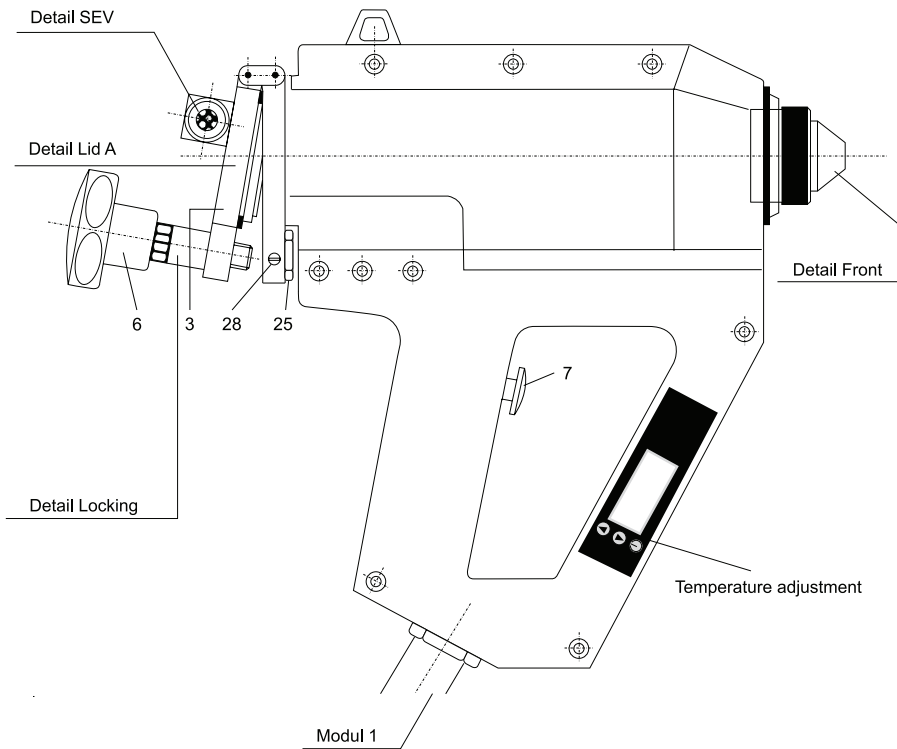


Premelter **art. 5563** (230 V)  
Premelter **art. 5567** (120 V)



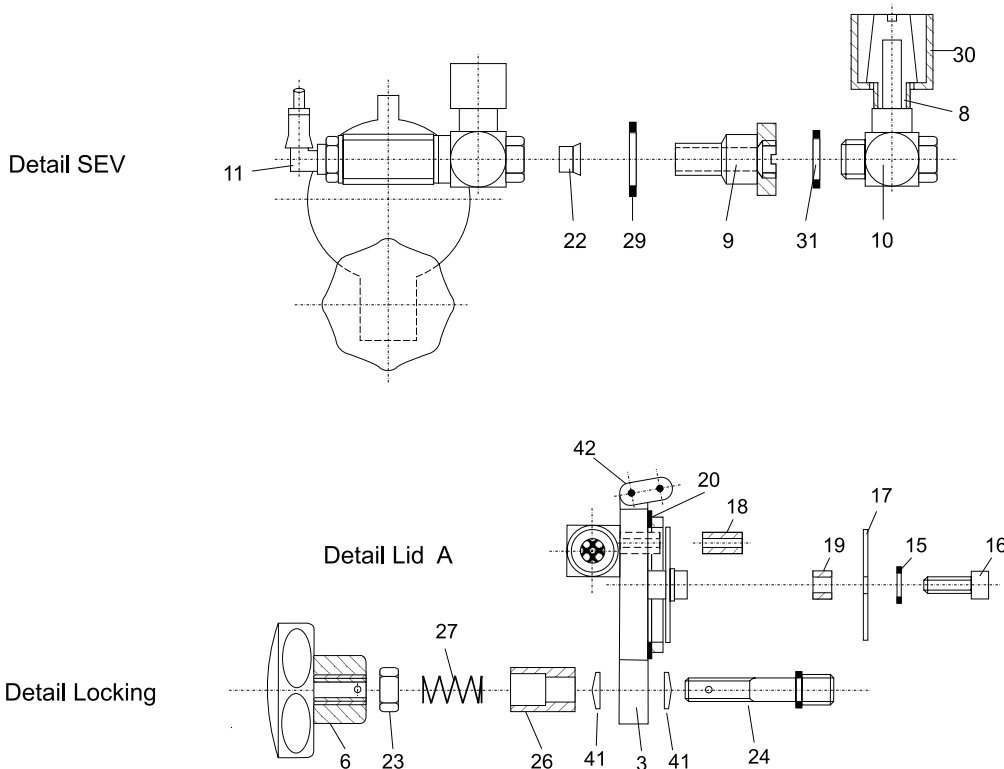
Stationary equipment **art. 3618** (only in conjunction with stand for storing **art. 3587**)

DET\_B\_EN\_TR 60



No.	Art.No.	name of article
1	2518	Thermometer
2	2517	Thermostat
3	3657	Lid "A" for TR 50.4 / 60
4	3661	Lid "D" for TR 55
5	3660	Lid "C" for TR 70 / 700 / 80
6	2613	Star Grip
7	2711	Trigger
12	3074	Nozzle M 14 for TR 50.4 / 55
13	1143	Nozzle M10 for TR 70 / 700
25	2884	Lock Nut for Lid Release
28	2911	Cover safety screw
35	2958	Adapter
38	2918	Switch on/off

DET\_Deckel-A\_EN (50.4/60)



No.	Art.No.	name of article
3	3657	Lid A for TR 50.4 / 60
4	3661	Lid D for TR 55
5	3660	Lid C for TR 70 / 700 / 80
6	2613	Star Grip
8	2683	Sound Absorber SEV
9	2693	DT-SEV
10	3016	L-Screwing
11	2697	90°-Screwing
14	3051	Spray Nozzle
15	2800	Disc
16	2801	Screw M6 x 16
17	2819	Plate
18	2820	Spacer
19	2802	Intensification
20	2603	O-Ring D 40x3 for TR 50.4 / 60
22	2696	Membrane
23	3665	Lock nut M 8
24	2883	Lid release shaft
26	2885	Spacer bush
27	2718	Spring
29	2692	O-Ring SEV
30	2694	Cap SEV D 18
31	2695	O-Ring DT SEV
32	3088	Spray Cap
33	2616	Spacer 25x2
36	2955	Flat Seal Gasket
37	2953	Cartridge piercer
41	2124	Disc Spring
42	2617	Hinge link

# Legend for Glue Applicator TR 60 – Art. 5351 (230 V), 5361 (120 V)

TR 60

## Technical Data

Denomination	TR 60
Article number	<b>5351</b> (230 V), <b>5361</b> (120 V)
Weight	1200g
Power supply	230 V / 50 Hz, 120 V / 60 Hz
Power consumption	400 Watt (600 Watt available upon request)
Current consumption	1,75 A
Degree of protection	I
Class of protection	IP 30
Temperature control	Electronics
Temperature limitation	Temperature controller
Operating temperature	50-210 °C
Consistency of temperature	+/- 2 °C
Temperature indication	Digital
Heat-up time	3-10 min.
Tank capacity	250 ml
Conveying system	Air pressure
Operating pressure	0,5 - 6 bar
Length of electric cable	4 m
Length of supply line of stand / hand applicator	4,5 m
Recommended melts	Hot-melt granulate, pillows and sticks

## Zubehör (optional erhältlich)

Footswitch  
**art. 3518**



Balancer **art. 3544**



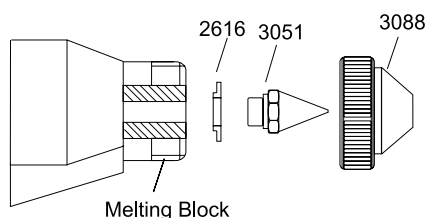
Premelter **art. 5563** (230 V)  
Premelter **art. 5567** (120 V)



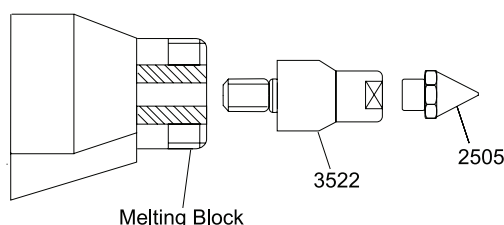
Stationary equipment **art. 3618** (only in conjunction with stand for storing **art. 3587**)

## TR 60 LCD – Detail Front

Nozzle Assembly for Spray Application

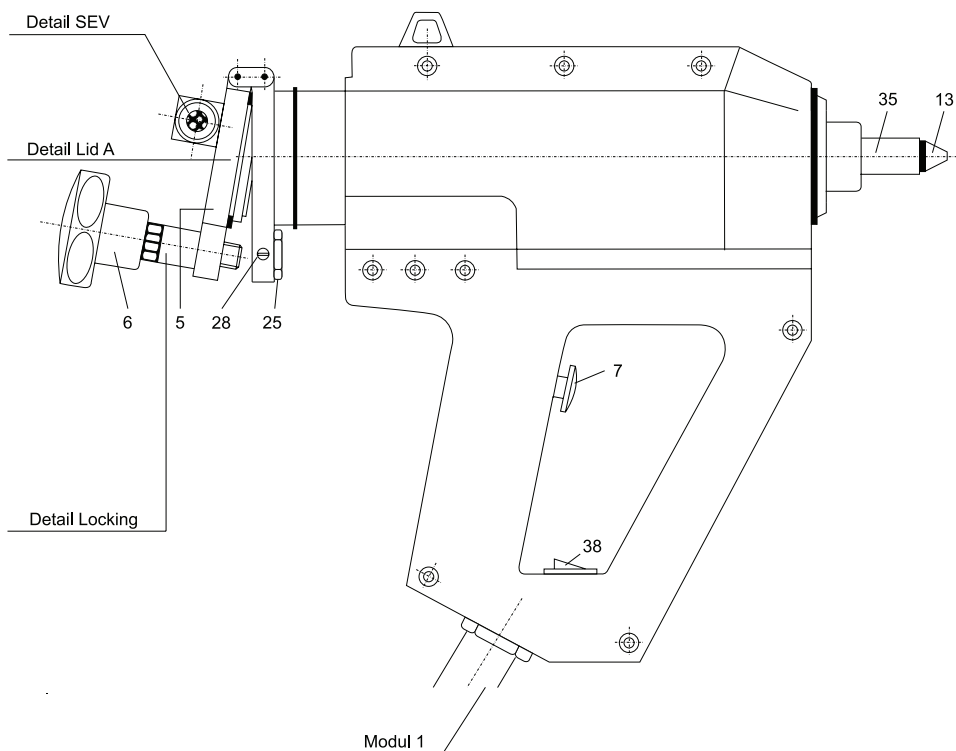


Nozzle Assembly for Bead and Dot Application



#2616 Spacer  
#3051 Spray Nozzle M10  
#3088 Spray cap  
#3522 Adapter  
#2505 Nozzle M10

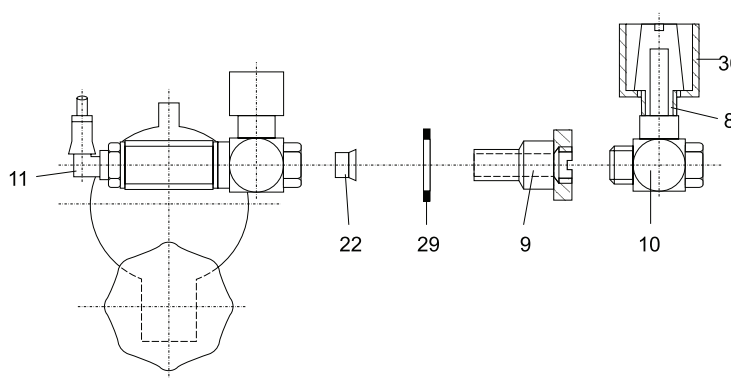
DET\_B\_EN\_TR 700



No.	Art.No.	name of article
1	2518	Thermometer
2	2517	Thermostat
3	3657	Lid "A" for TR 50.4 / 60
4	3661	Lid "D" for TR 55
5	3660	Lid "C" for TR 70 / 700 / 80
6	2613	Star Grip
7	2711	Trigger
12	3074	Nozzle M 14 for TR 50.4 / 55
13	1143	Nozzle M10 for TR 70 / 700
25	2884	Lock Nut for Lid Release
28	2911	Cover safety screw
35	2958	Adapter
38	2918	Switch on/off

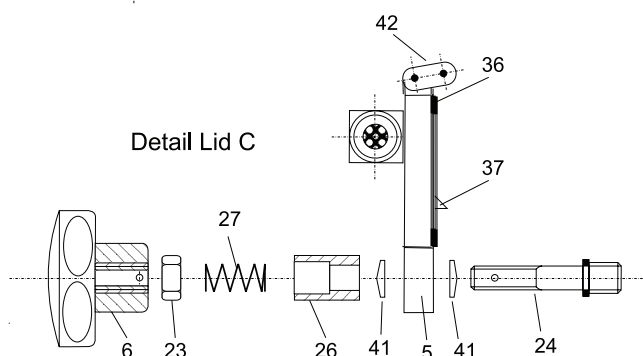
DET\_Deckel-C\_EN (TR 700/70/80)

Detail SEV



Detail Lid C

Detail Locking



No.	Art.No.	name of article
3	3657	Lid A for TR 50.4 / 60
4	3661	Lid D for TR 55
5	3660	Lid C for TR 70 / 700 / 80
6	2613	Star Grip
8	2683	Sound Absorber SEV
9	2693	DT-SEV
10	3016	L-Screwing
11	2697	90°-Screwing
14	3051	Spray Nozzle
15	2800	Disc
16	2801	Screw M6 x 16
17	2819	Plate
18	2820	Spacer
19	2802	Intensification
20	2603	O-Ring D 40x3 for TR 50.4 / 60
22	2696	Membrane
23	3665	Lock nut M 8
24	2883	Lid release shaft
26	2885	Spacer bush
27	2718	Spring
29	2692	O-Ring SEV
30	2694	Cap SEV D 18
31	2695	O-Ring DT SEV
32	3088	Spray Cap
33	2616	Spacer 25x2
36	2955	Flat Seal Gasket
37	2953	Cartridge piercer
41	2124	Disc Spring
42	2617	Hinge link

# Legend for Glue Applicator TR 700 – Art. 5385 (230 V), 5370 (120 V)

## Technical Data

Denomination	TR 700
Article number	<b>5385</b> (230 V), <b>5370</b> (120 V)
Weight	1400g
Power supply	230 V / 50 Hz, 120 V / 60 Hz
Power consumption	400 Watt (600 Watt available upon request)
Current consumption	1,75 A
Degree of protection	I
Class of protection	IP 30
Temperature control	Thermostat
Temperature limitation	Temperature controller
Operating temperature	120 °C
Consistency of temperature	+/- 5 °C
Temperature indication	Digital
Heat-up time	3-10 min.
Tank capacity	310 ml
Conveying system	Air pressure
Operating pressure	0,5 - 6 bar
Length of electric cable	8,5 m
Recommended melts	310 ml hot-melt cartridges

TR 700

## Accessories (optional)

Stand for storing  
**art. 3587**



Balancer **art. 3544**

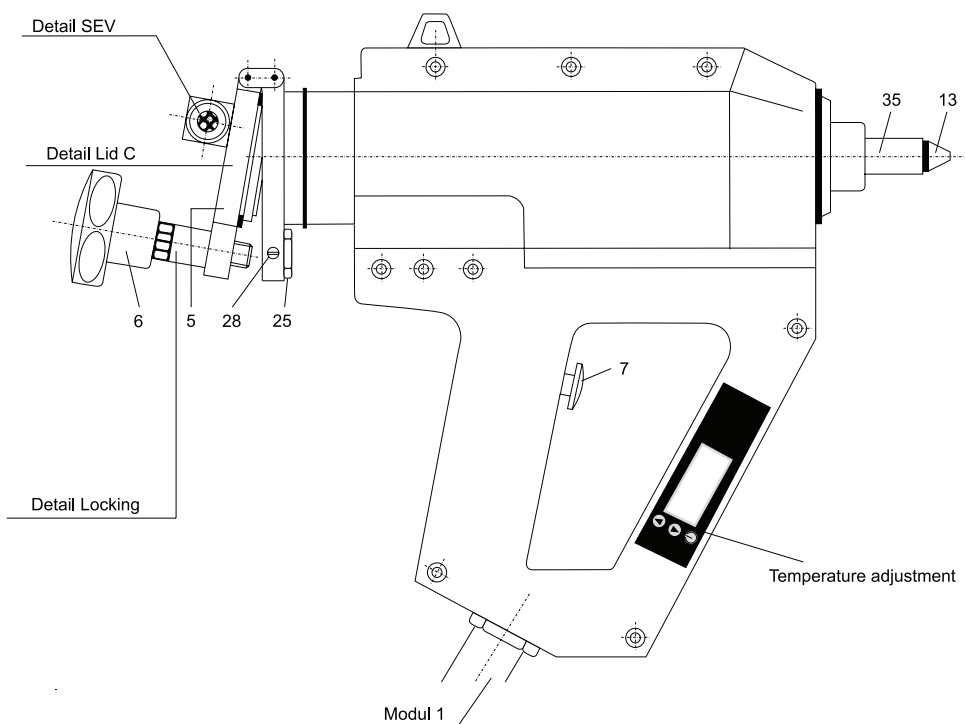


Cartridge preheater **art. 5398** (230 V)  
Cartridge preheater **art. 5399** (120 V)



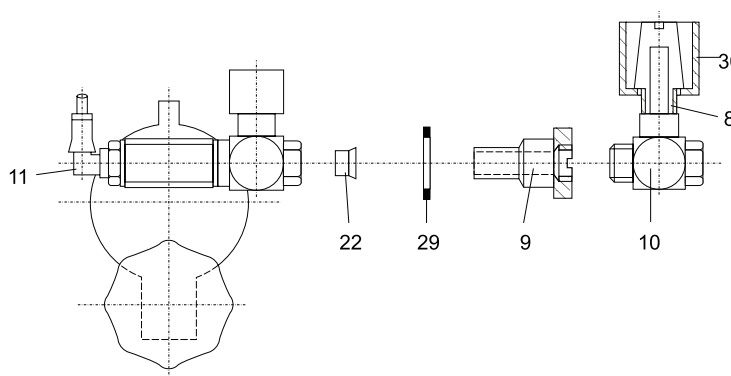
Stationary equipment **art. 3618** (only in conjunction with stand for storing **art. 3587**)

DET\_B\_EN\_TR 70



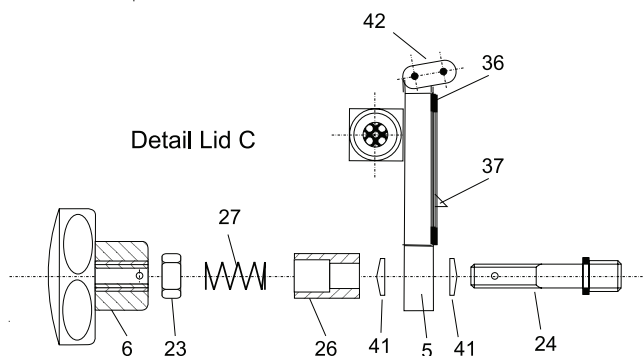
DET\_Deckel-C\_EN (TR 700/70/80)

Detail SEV



Detail Lid C

Detail Locking





# Legend for Glue Applicator TR 70 – Art. 5347 (230 V), 5365 (120 V)

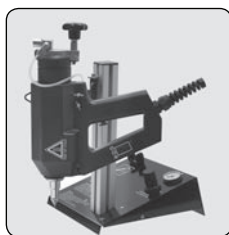
TR 70

## Technical Data

Denomination	TR 70
Article number	<b>5347</b> (230 V), <b>5365</b> (120 V)
Weight	1400g
Power supply	230 V / 50 Hz, 120 V / 60 Hz
Power consumption	400 Watt (600 Watt available upon request)
Current consumption	1,75 A
Degree of protection	I
Class of protection	IP 30
Temperature control	Electronics
Temperature limitation	Temperature controller
Operating temperature	50-210 °C
Consistency of temperature	+/- 2 °C
Temperature indication	Digital
Heat-up time	3-10 min.
Tank capacity	310 ml
Conveying system	Air pressure
Operating pressure	0,5 - 6 bar
Length of electric cable	8,5 m
Recommended melts	310 ml hot-melt cartridges

## Accessories (optional)

Stand for storing  
**art. 3587**



Balancer **art. 3544**

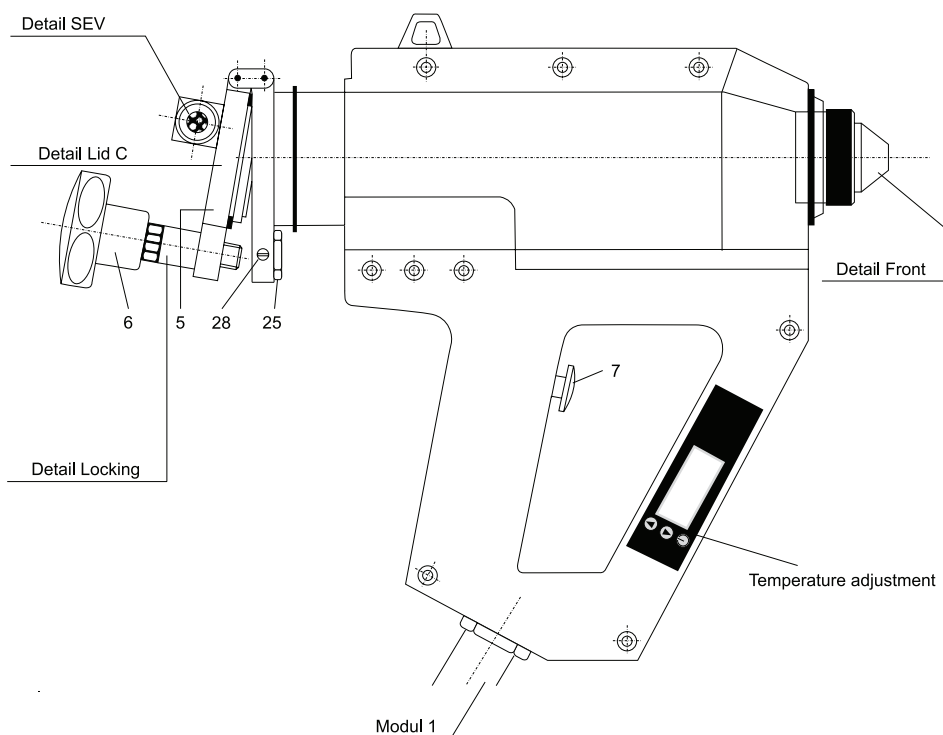


Cartridge preheater **art. 5398** (230 V)  
Cartridge preheater **art. 5399** (120 V)



Stationary equipment **art. 3618** (only in conjunction with stand for storing **art. 3587**)

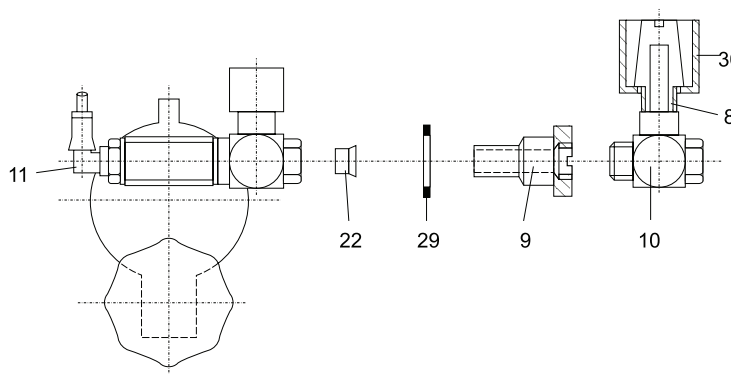
DET\_B\_EN\_TR80



No.	Art.No.	name of article
1	2518	Thermometer
2	2517	Thermostat
3	3657	Lid "A" for TR 50.4 / 60
4	3661	Lid "D" for TR 55
5	3660	Lid "C" for TR 70 / 700 / 80
6	2613	Star Grip
7	2711	Trigger
12	3074	Nozzle M 14 for TR 50.4 / 55
13	1143	Nozzle M10 for TR 70 / 700
25	2884	Lock Nut for Lid Release
28	2911	Cover safety screw
35	2958	Adapter
38	2918	Switch on/off

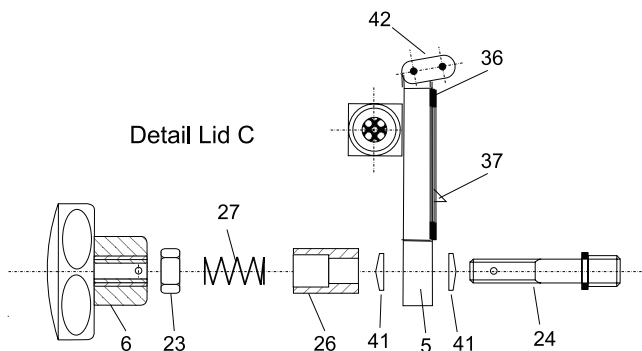
DET\_Deckel-C\_EN (TR 700/70/80)

Detail SEV



Detail Lid C

Detail Locking



No.	Art.No.	name of article
3	3657	Lid A for TR 50.4 / 60
4	3661	Lid D for TR 55
5	3660	Lid C for TR 70 / 700 / 80
6	2613	Star Grip
8	2683	Sound Absorber SEV
9	2693	DT-SEV
10	3016	L-Screwing
11	2697	90°-Screwing
14	3051	Spray Nozzle
15	2800	Disc
16	2801	Screw M6 x 16
17	2819	Plate
18	2820	Spacer
19	2802	Intensification
20	2603	O-Ring D 40x3 for TR 50.4 / 60
22	2696	Membrane
23	3665	Lock nut M 8
24	2883	Lid release shaft
26	2885	Spacer bush
27	2718	Spring
29	2692	O-Ring SEV
30	2694	Cap SEV D 18
31	2695	O-Ring DT SEV
32	3088	Spray Cap
33	2616	Spacer 25x2
36	2955	Flat Seal Gasket
37	2953	Cartridge piercer
41	2124	Disc Spring
42	2617	Hinge link

# Legend for Glue Applicator TR 80 – Art. 5354 (230 V), 5362 (120 V)

## Technical Data

Denomination	TR 80
Article number	<b>5354</b> (230 V), <b>5362</b> (120 V)
Weight	1400g
Power supply	230 V / 50 Hz, 120 V / 60 Hz
Power consumption	400 Watt (600 Watt available upon request)
Current consumption	1,75 A
Degree of protection	I
Class of protection	IP 30
Temperature control	Electronics
Temperature limitation	Temperature controller
Operating temperature	50-210 °C
Consistency of temperature	+/- 2 °C
Temperature indication	Digital
Heat-up time	3-10 min.
Tank capacity	310 ml
Conveying system	Air pressure
Operating pressure	0,5 - 6 bar
Length of electric cable	8,5 m
Length of supply line of stand / hand applicator	4,5 m
Recommended melts	310 ml hot-melt cartridges

## Accessories (optional)

Footswitch  
**art. 3518**



Balancer **art. 3544**



Cartridge preheater **art. 5398** (230 V)  
Cartridge preheater **art. 5399** (120 V)

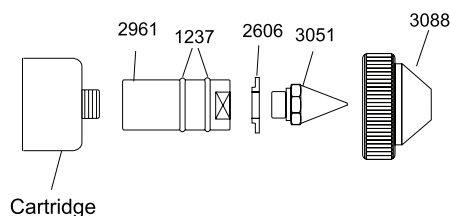


Stationary equipment **art. 3618** (only in conjunction with stand for storing **art. 3587**)

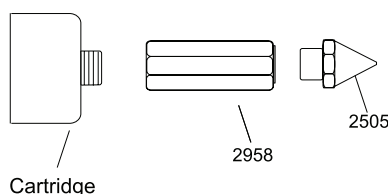


## TR 80 LCD – Detail Front

Nozzle Assembly for Spray Application



Nozzle Assembly for Bead and Dot Application



#2961 Sprayadapter  
#1237 O-Ring  
#2606 Spacer  
#3051 Spray nozzle M10  
#3088 Spray cap  
#2958 Adapter  
#2505 Nozzle M10